



Šrouby metrické

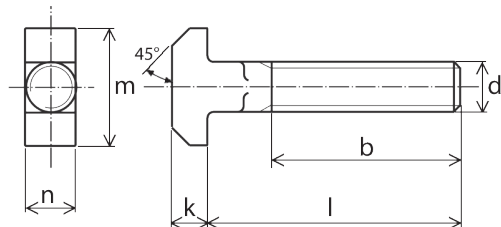
NORMA: DIN 186

ŠROUBY S T HLAVOU - se čtyřhranem T HEAD BOLTS WITH SQUARE NECK

Materiál: Ocel, nerez A2, A4

Povrchová úprava: Zinek

Pevnost: 4.6



d	M 6	M 8	M 10	M 12	M 16	M 20	M 24	M 27	M 30
b	18	22	26	30	38	46	54	62	70
m	16	18	21	26	30	36	43	48	54
k	4,5	5,5	7	8	10,5	13	15	18	19
n	6	8	10	12	16	20	24	27	30

d	l
M 6	30
M 6	40
M 6	50
M 8	30
M 8	40
M 8	50
M 8	60
M 10	30
M 10	40
M 10	50
M 10	60
M 12	40
M 12	50
M 12	60
M 12	70
M 12	80
M 12	100
M 16	40
M 16	50
M 16	60
M 16	70
M 16	80
M 16	100
M 16	120
M 20	50
M 20	60
M 20	70
M 20	80
M 20	90

d	l
M 20	100
M 20	110
M 20	120
M 20	140
M 20	160
M 20	180
M 20	200
M 24	40
M 24	45
M 24	50
M 24	60
M 24	70
M 24	80
M 24	90
M 24	100
M 24	110
M 24	120
M 24	140
M 24	160
M 24	180
M 24	200
M 27	40
M 27	45
M 27	50
M 27	60
M 27	70
M 27	90
M 27	100
M 27	110

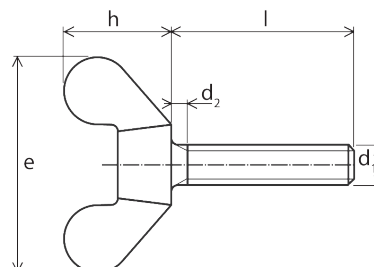
d	l
M 27	120
M 27	200
M 30	40
M 30	45
M 30	50
M 30	60
M 30	80
M 30	90
M 30	100
M 30	110
M 30	120
M 30	140
M 30	160
M 30	180
M 30	200

NORMA: DIN 316

KŘÍDLOVÉ ŠROUBY WING SCREW

Materiál: Ocel, nerez A2, A4

Povrchová úprava: Zinek



d1	M 3	M 4	M 5	M 6	M 8	M 10	M 12
d2 max	6	8	11	13	16	20	23
e max	16	20	26	33	39	51	65
h max	8	10,5	13	17	20	25	33,5

d1	l
M 3	6
M 3	10
M 3	12
M 3	16
M 4	8
M 4	10
M 4	16
M 4	20
M 4	25
M 4	30
M 4	35
M 4	40
M 5	8
M 5	10
M 5	12
M 5	16
M 5	20
M 5	25
M 5	30
M 5	35

d1	l
M 5	40
M 5	50
M 6	8
M 6	10
M 6	12
M 6	16
M 6	20
M 6	25
M 6	30
M 6	35
M 6	40
M 6	50
M 6	60
M 8	10
M 8	12
M 8	16
M 8	20
M 8	25
M 8	30
M 8	35

d1	l
M 8	40
M 8	50
M 8	60
M 8	70
M 8	80
M 10	16
M 10	20
M 10	25
M 10	30
M 10	35
M 10	40
M 10	50
M 10	60
M 12	20
M 12	25
M 12	30
M 12	40
M 12	50
M 12	60